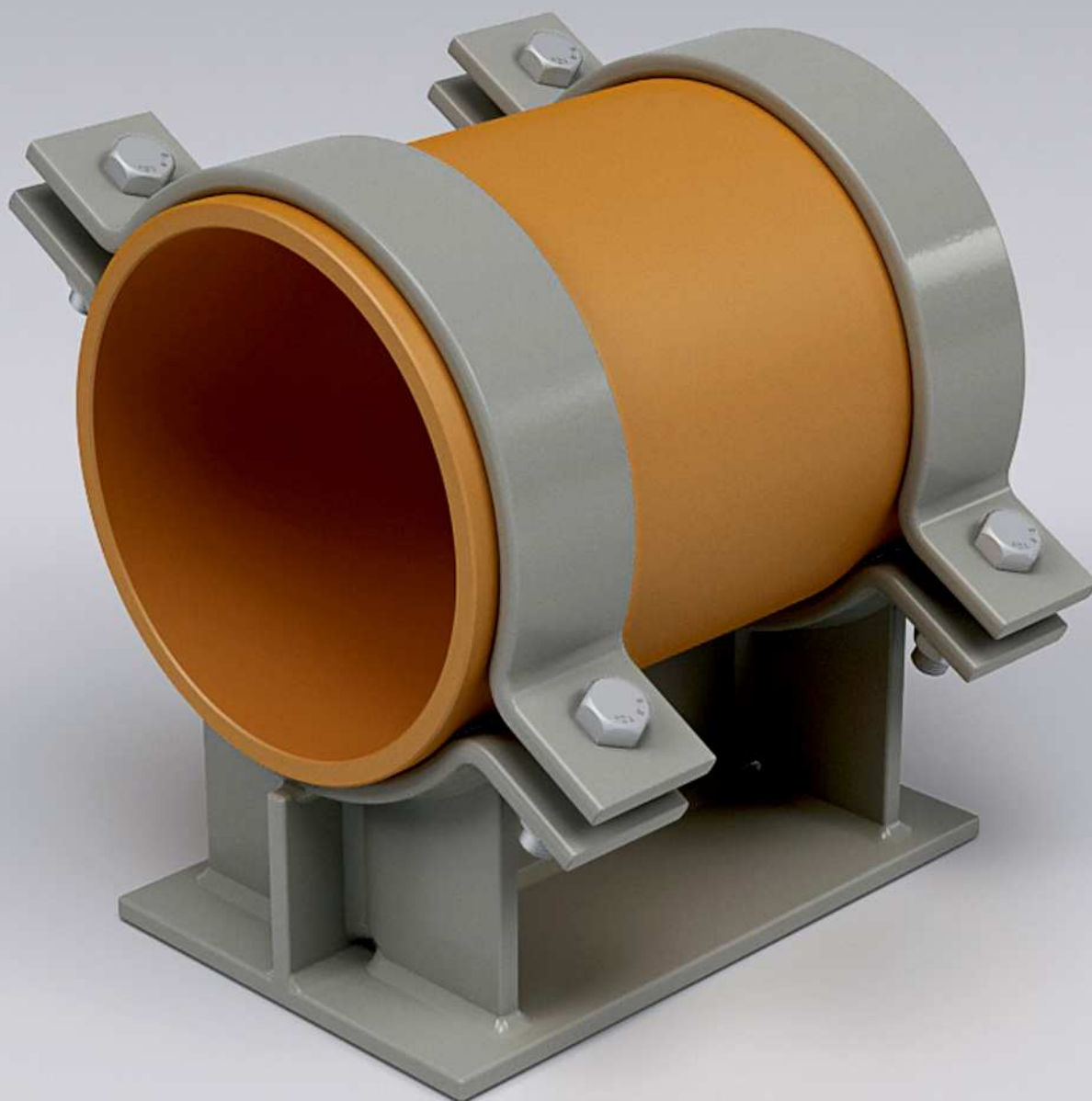


## Clamped Base 01 variable height

**CB01**

Clamp base with variable height generally used as slide bearings for horizontally arranged pipe system. As with pipe clamps, the application spectrum covers a diameter range from NPS 1/2" to NPS 3".

<b>Material group</b>	<b>Dimensions</b>	<b>Surface finish</b>
Carbon Steel	Acc. client	Mill
Alloy Steel	specification	Paint coated
Stainless Steel		HDG



## Clamped Base 01 variable height

**CB01**

Clamp base with variable height generally used as slide bearings for horizontally arranged pipe system. As with pipe clamps, the application spectrum covers a diameter range from NPS 4" to NPS24".

<b>Material group</b>	<b>Dimensions</b>	<b>Surface finish</b>
Carbon Steel	Acc. client	Mill
Alloy Steel	specification	Paint caoted
Stainless Steel		HDG



## Clamped Base 02-A single clamp

**CB02-A**

Clamp single base with variable height generally used as slide bearings for horizontally arranged pipe system. As with pipe clamps, the application spectrum covers a diameter range from NPS 1/2" to NPS24".

<b>Material group</b>	<b>Dimensions</b>	<b>Surface finish</b>
Carbon Steel	Acc. client	Mill
Alloy Steel	specification	Paint coated
Stainless Steel		HDG

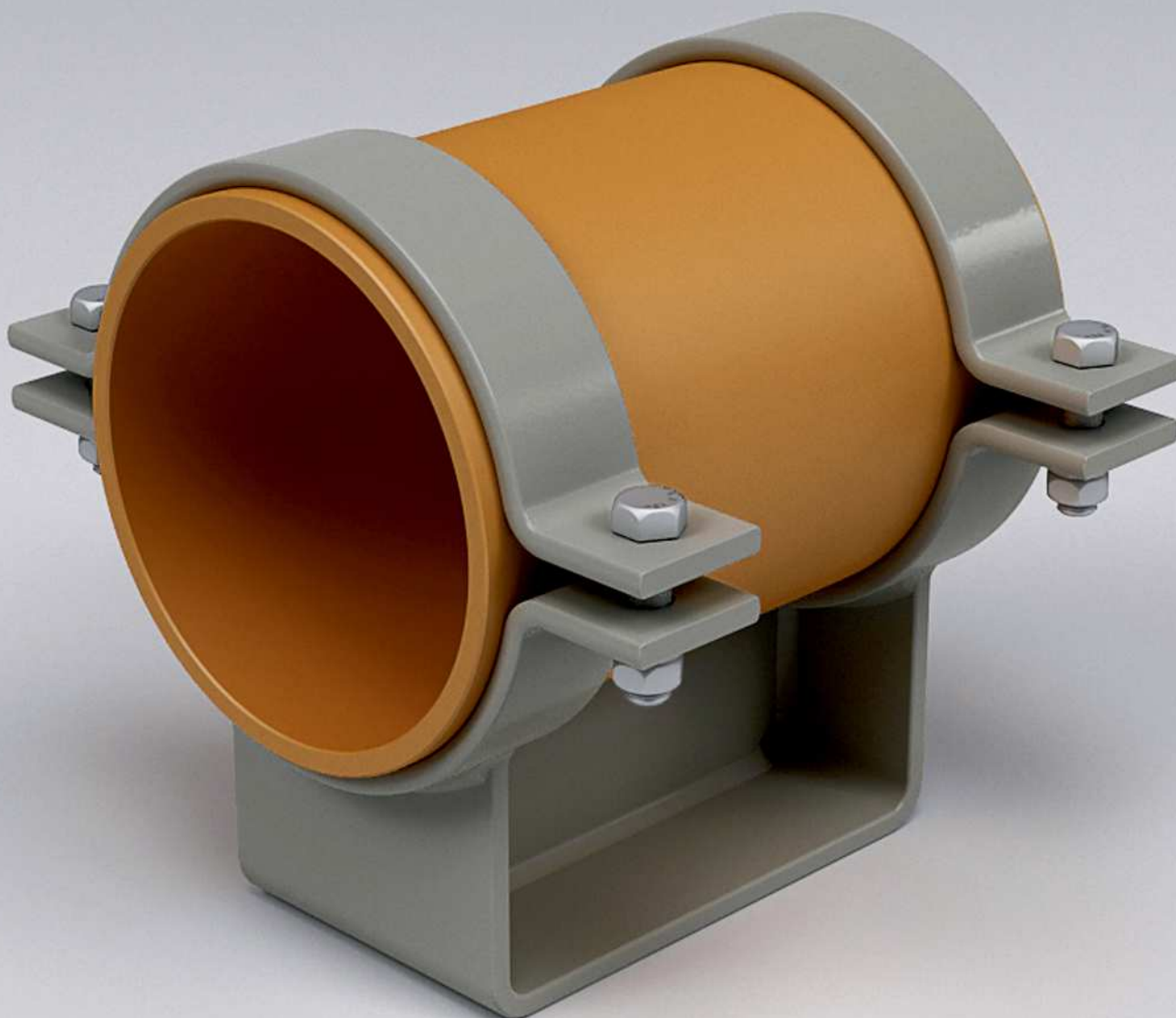


## CB02-B

### Clamped Base 02-B single clamp

Clamp single base with variable height used bolted to beam for horizontally arranged pipe system. As with pipe clamps, the application spectrum covers a diameter range from NPS 1/2" to NPS24".

<b>Material group</b>	<b>Dimensions</b>	<b>Surface finish</b>
Carbon Steel	Acc. client	Mill
Alloy Steel	specification	Paint caoted
Stainless Steel		HDG



## Clamped Base 03-A

**CB03-A**

Clamp base with variable height generally used as slide bearings for horizontally arranged pipe system. Base and ribs fabricated from one sheet metal. As with pipe clamps, the app. spectrum covers a diameter range from NPS 4" to NPS24".

<b>Material group</b>	<b>Dimensions</b>	<b>Surface finish</b>
Carbon Steel	Shoe lenght	Mill
Alloy Steel	greater than	Paint caoted
Stainless Steel	shoe height	HDG



# CB04-A

## Clamped Base 04-A adjustable

Clamp base with adjustable height or angle, bolted stanch element. Used as slide bearings for horizontally arranged pipe system. As with pipe clamps, the app. spectrum covers a diameter range from NPS 1/2" to NPS 24".

### Material group

Carbon Steel  
Alloy Steel  
Stainless Steel

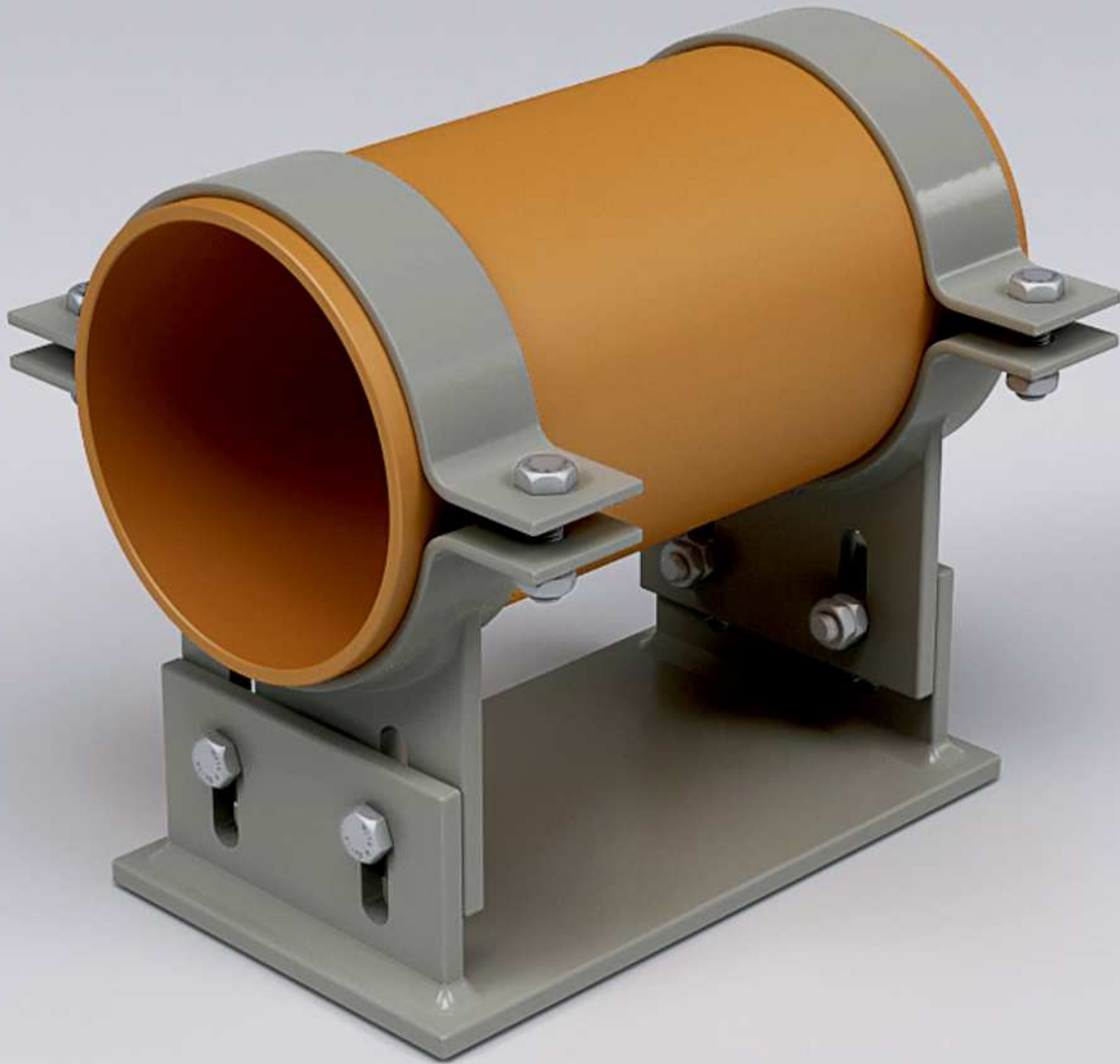
### Dimensions

Acc. client  
specification

### Surface finish

Mill  
Paint coated  
HDG





## Clamped Base 04-B adjustable

**CB04-B**

Clamp base with adjustable height or angle, bolted ribs element. Used as slide bearings for horizontally arranged pipe system. As with pipe clamps, the app. spectrum covers a diameter range from NPS 4" to NPS 24".

<b>Material group</b>	<b>Dimensions</b>	<b>Surface finish</b>
Carbon Steel	Acc. client	Mill
Alloy Steel	specification	Paint caoted
Stainless Steel		HDG



## Clamped Adjustable 05 shape leg

Clamp adjustable shape leg. Used as vertical arranged pipe system. As with pipe clamps, the app. spectrum covers a diameter range from NPS 2" to NPS 24".

# CA05

### Material group

Carbon Steel  
Alloy Steel  
Stainless Steel

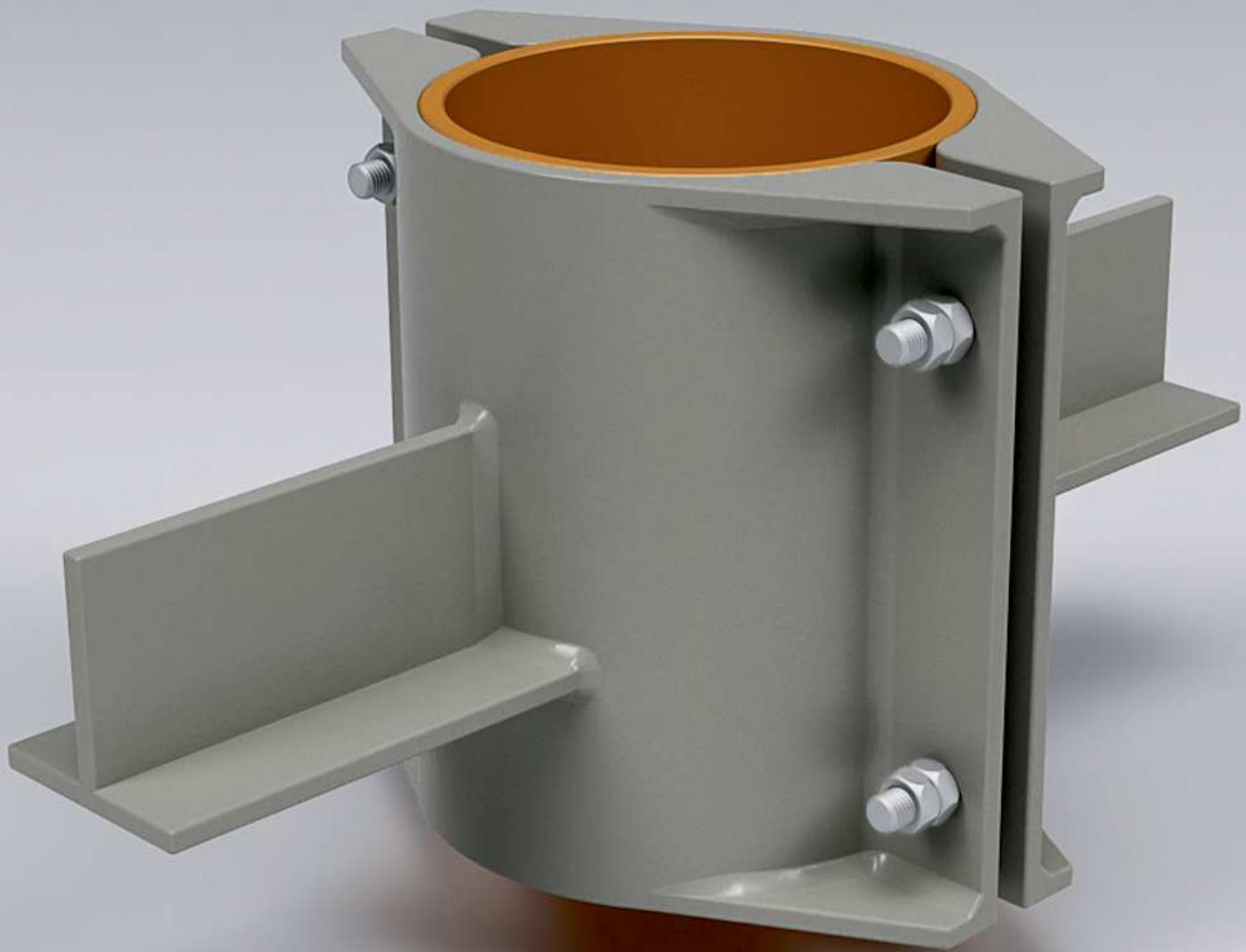
### Dimensions

Acc. client  
specification

### Surface finish

Mill  
Paint coated  
HDG





## Clamped Guide 01

Clamped guide stop support used on platforms for vertically arranged pipe system. As with pipe clamps, the app. spectrum covers a diameter range from NPS 2" to NPS 24".

**CG01**

<b>Material group</b>	<b>Dimensions</b>	<b>Surface finish</b>
Carbon Steel	Acc. client	Mill
Alloy Steel	specification	Paint caoted
Stainless Steel		HDG



## Clamped Dummy Leg 01

**CL01-A**

Dummy leg with clamping for elbow used as vertically oriented support, variable in height. As with U-bolt clamps the application spectrum covers a diameter range from NPS 2" to NPS 8".

<b>Material group</b>	<b>Dimensions</b>	<b>Surface finish</b>
Carbon Steel	Acc. client	Mill
Alloy Steel	specification	Paint caoted
Stainless Steel		HDG

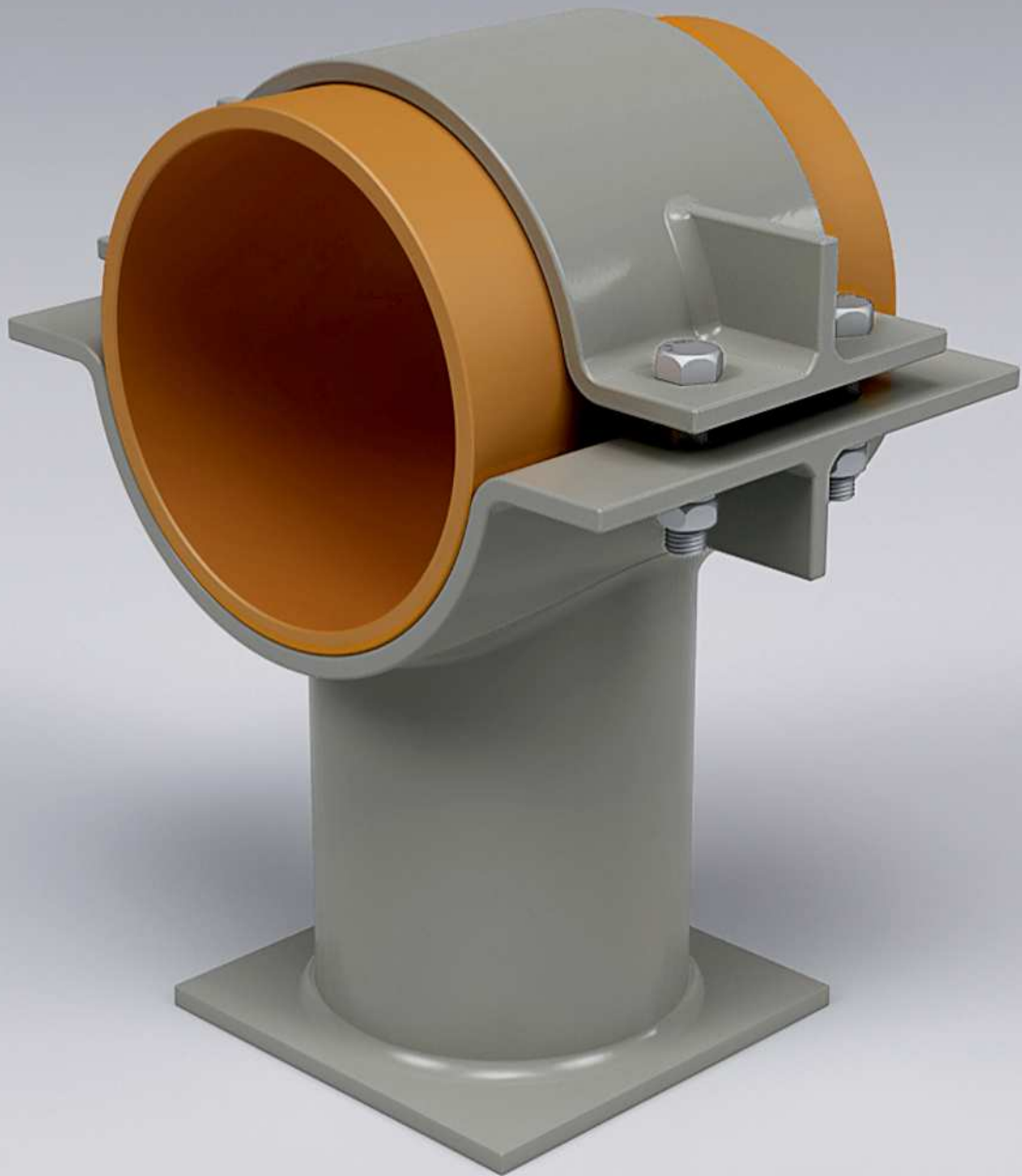


**CL01-B**

## Clamped Dummy Leg 01

Clamped dummy leg with variable height generally used as rest on angular arranged pipe system. As with pipe clamps the application spectrum covers a diameter range from NPS 2" to NPS 24".

<b>Material group</b>	<b>Dimensions</b>	<b>Surface finish</b>
Carbon Steel	Acc. client	Mill
Alloy Steel	specification	Paint caoted
Stainless Steel		HDG

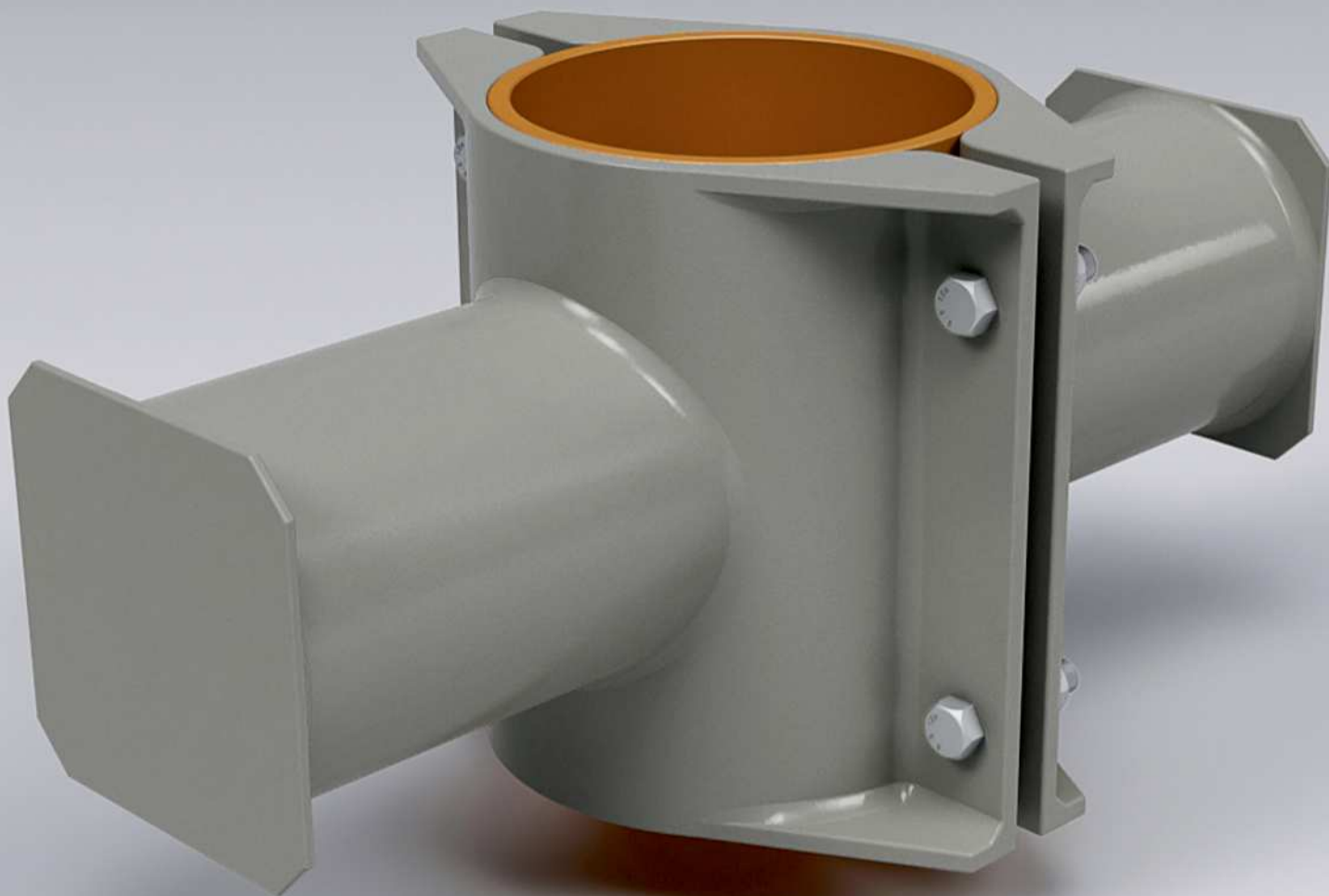


## Clamped Dummy Leg 01

**CL01-C**

Clamped dummy leg with variable height generally used as rest on horizontally arranged pipe system. As with pipe clamps the application spectrum covers a diameter range from NPS 2" to NPS 24".

<b>Material group</b>	<b>Dimensions</b>	<b>Surface finish</b>
Carbon Steel	Acc. client	Mill
Alloy Steel	specification	Paint coated
Stainless Steel		HDG

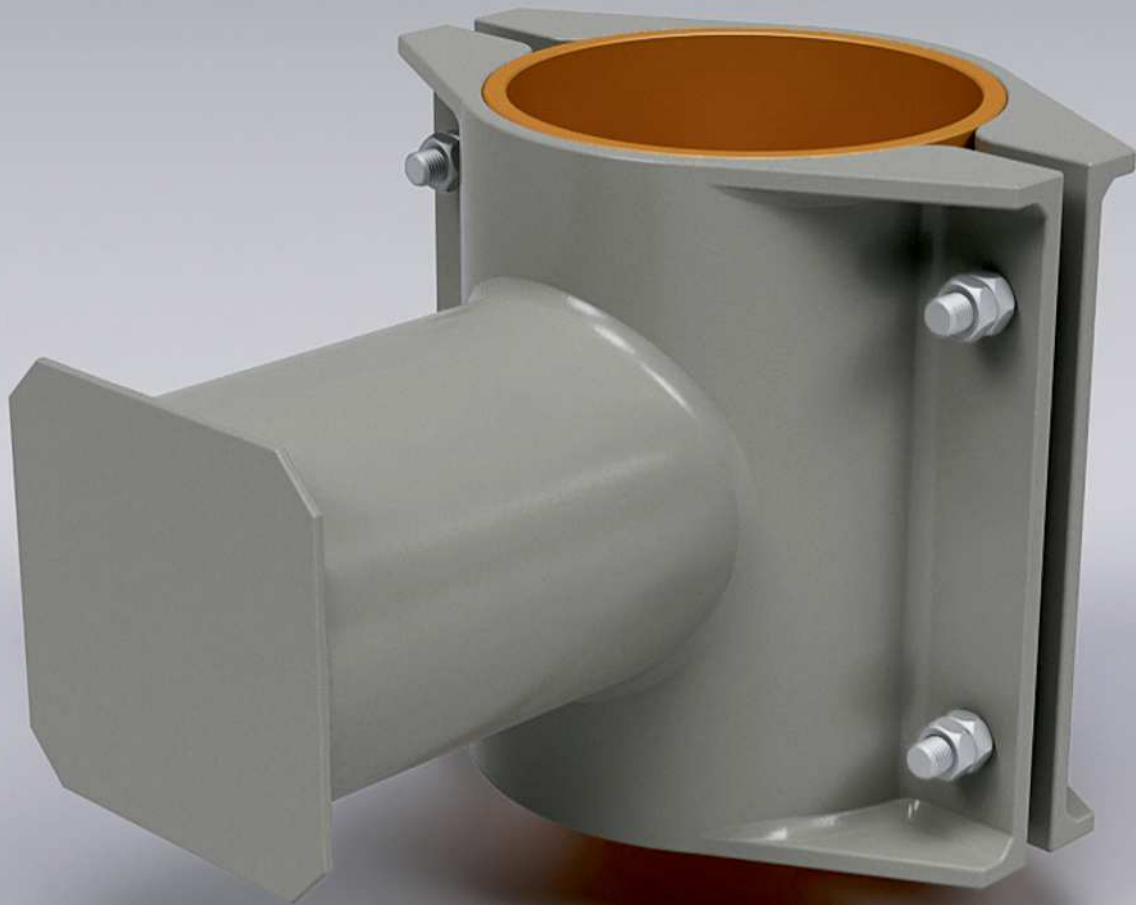


**CL02-A**

## Clamped Trunnion Leg 02

Clamped double sided trunnion with variable length generally used as rest on vertically arranged pipe system. As with pipe clamps the application spectrum covers a diameter range from NPS 2" to NPS 24".

<b>Material group</b>	<b>Dimensions</b>	<b>Surface finish</b>
Carbon Steel	Acc. client	Mill
Alloy Steel	specification	Paint coated
Stainless Steel		HDG



## Clamped Trunnion Leg 02

**CL02-B**

Clamped trunnion with variable length generally used as rest on vertically arranged pipe system. As with pipe clamps the application spectrum covers a diameter range from NPS 2" to NPS 24".

<b>Material group</b>	<b>Dimensions</b>	<b>Surface finish</b>
Carbon Steel	Acc. client	Mill
Alloy Steel	specification	Paint coated
Stainless Steel		HDG





**CL03-A**

## Clamped Shape Leg 01

Shape leg with clamping for elbow used as vertically oriented support, variable in height. As with U-bolt clamps the application spectrum covers a diameter range from NPS 2" to NPS 8".

### Material group

Carbon Steel  
Alloy Steel  
Stainless Steel

### Dimensions

Acc. client  
specification

### Surface finish

Mill  
Paint coated  
HDG



## Clamped Shape Leg 03

**CL03-B**

Clamped shape leg with variable height generally used as rest on angular arranged pipe system. As with pipe clamps the application spectrum covers a diameter range from NPS 2" to NPS 24".

<b>Material group</b>	<b>Dimensions</b>	<b>Surface finish</b>
Carbon Steel	Acc. client	Mill
Alloy Steel	specification	Paint caoted
Stainless Steel		HDG

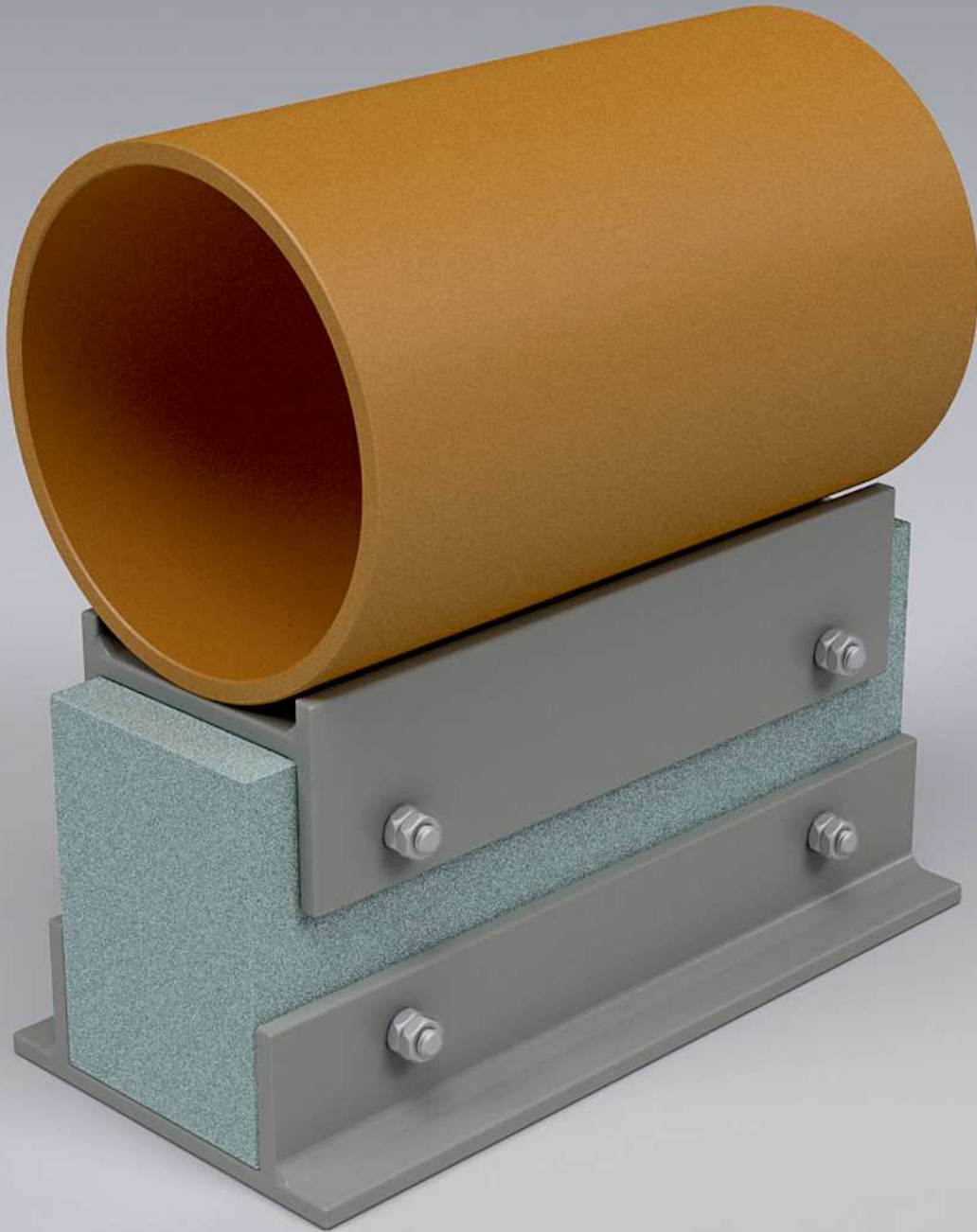


## Clamped Dummy Leg 03

**CL03-C**

Clamped shape leg with variable height generally used as rest on horizontally arranged pipe system. As with pipe clamps the application spectrum covers a diameter range from NPS 2" to NPS 24".

<b>Material group</b>	<b>Dimensions</b>	<b>Surface finish</b>
Carbon Steel	Acc. client	Mill
Alloy Steel	specification	Paint coated
Stainless Steel		HDG



## Insulated Cold Pipe Welded Base

Welded base with variable height generally used as slide bearings for horizontally arranged cold pipe system. Application spectrum covers a diameter range from NPS 4" to NPS24".

**IB01**

<b>Material group</b>	<b>Dimensions</b>	<b>Surface finish</b>
Carbon Steel	Acc. client	Mill
Alloy Steel	specification	Paint coated
Stainless Steel		HDG



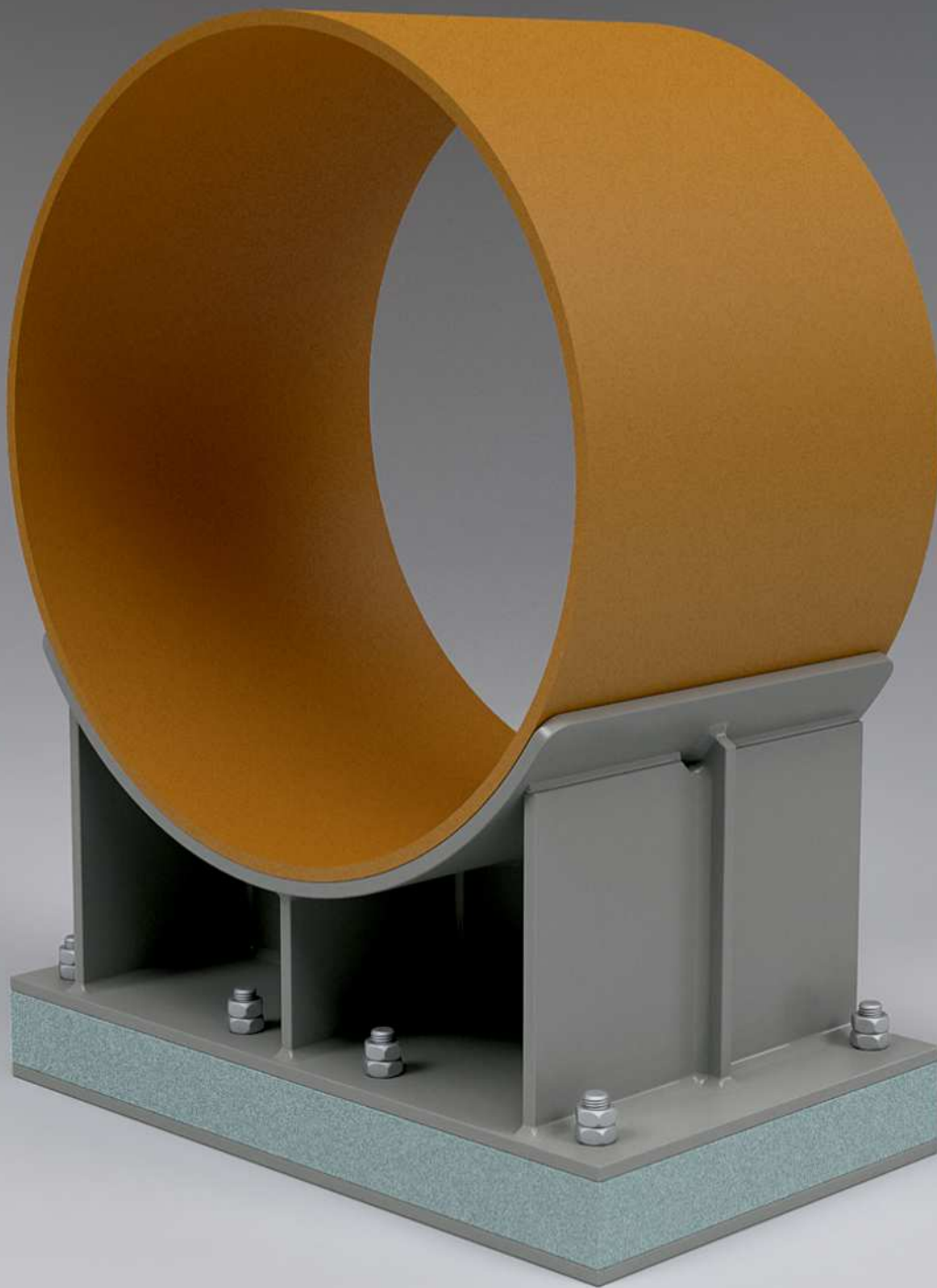
## Insulated Cold Pipe Welded Base

Welded base + reinforcing pad with variable height generally used as slide bearings for horizontally arranged cold pipe system. Application spectrum covers a diameter range from NPS 4" to NPS24".

**IB02**

<b>Material group</b>	<b>Dimensions</b>	<b>Surface finish</b>
Carbon Steel	Acc. client	Mill
Alloy Steel	specification	Paint caoted
Stainless Steel		HDG





## Insulated Cold Pipe Large Base

Welded base with variable height generally used as slide bearings for horizontally arranged cold pipe system. Application spectrum covers a diameter range above NPS24".

# IB03

### Material group

Carbon Steel  
Alloy Steel  
Stainless Steel

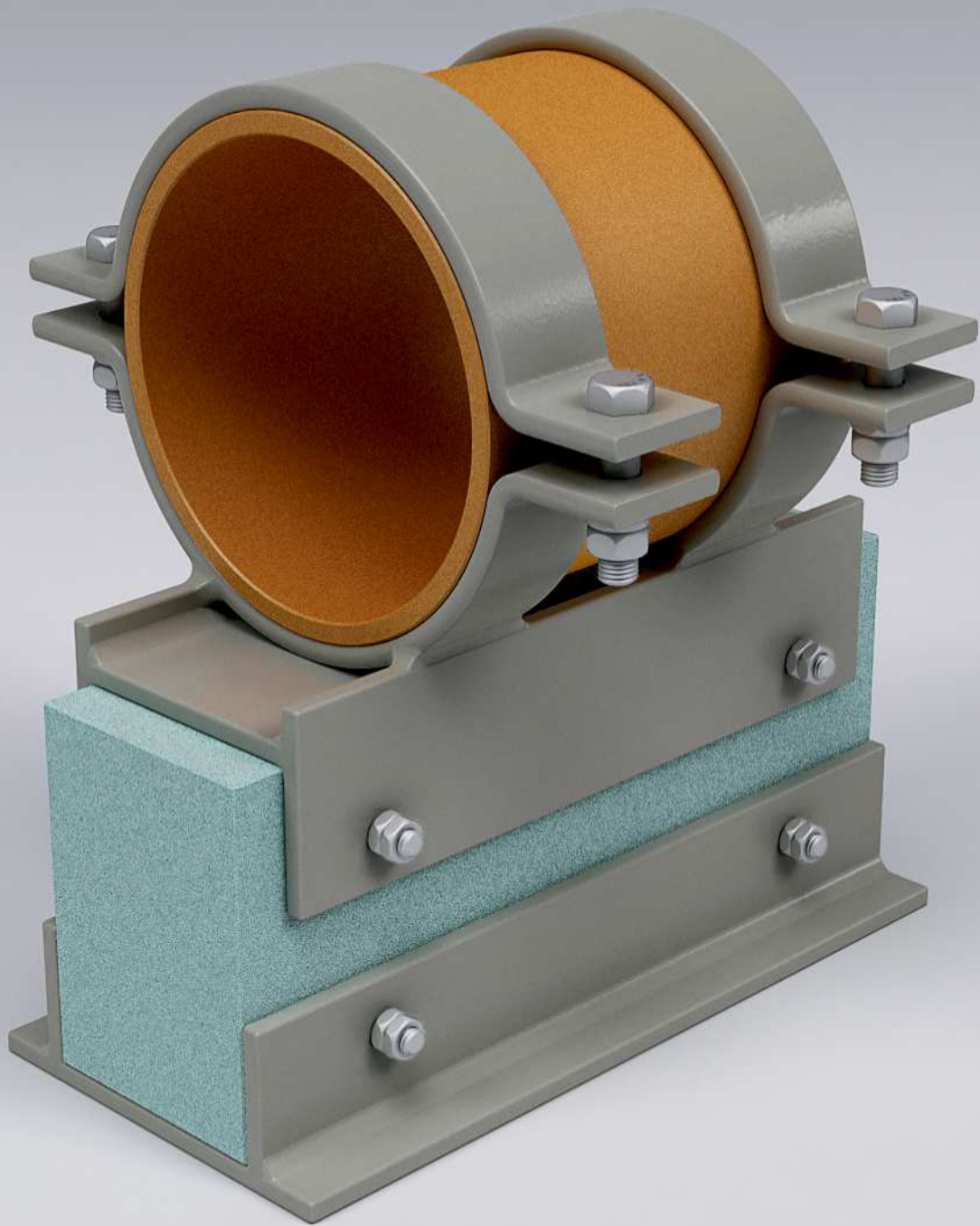
### Dimensions

above 24"

### Surface finish

Mill  
Paint coated  
HDG



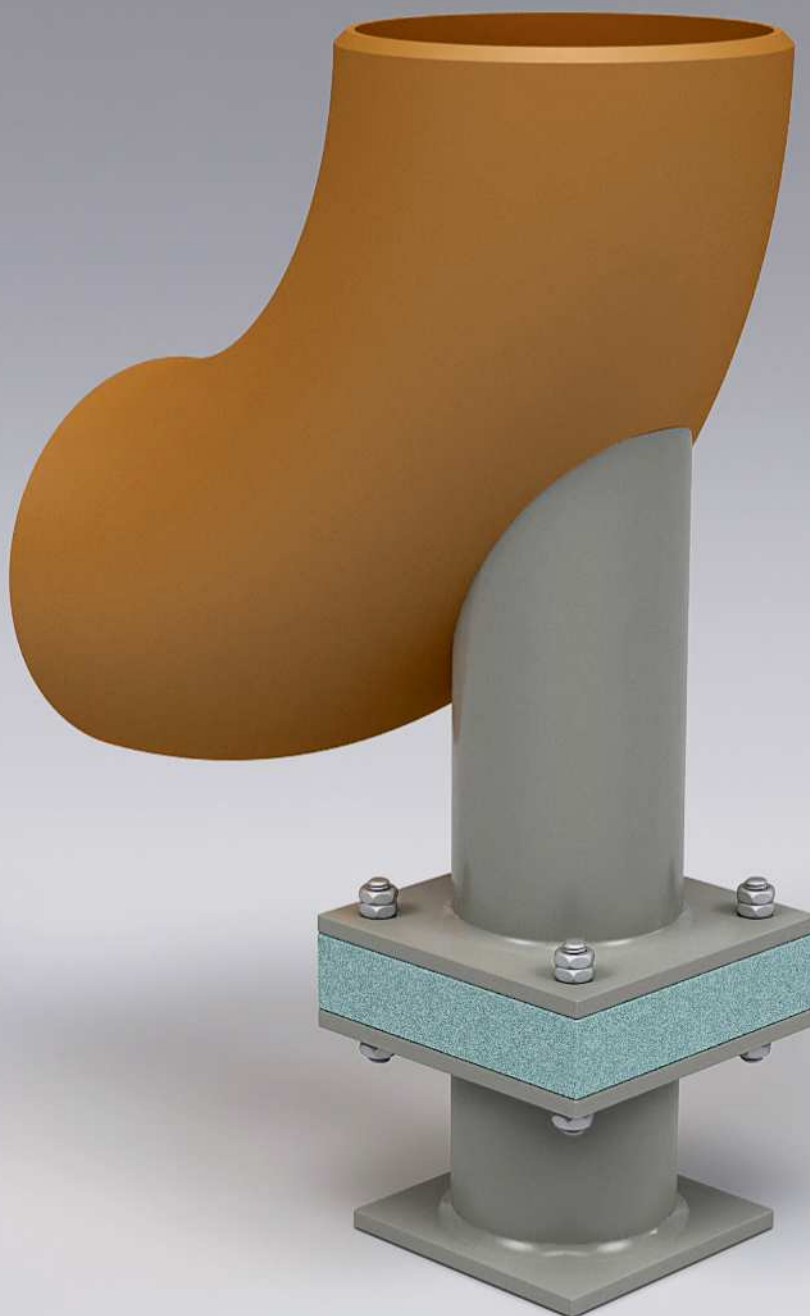


## Insulated Cold Pipe Clamped Base

Clamped base with variable height generally used as slide bearings for horizontally arranged cold pipe system. As with pipe clamp the application spectrum covers a diameter range from NPS 2" to NPS24".

**IB04**

<b>Material group</b>	<b>Dimensions</b>	<b>Surface finish</b>
Carbon Steel	Acc. client	Mill
Alloy Steel	specification	Paint coated
Stainless Steel		HDG



## Insulated Cold Pipe Dummy Leg

Welded to pipe dummy leg with variable height generally arranged as rest on elbow, vertically oriented support for cold pipe system.

**IL01-A**

### Material group

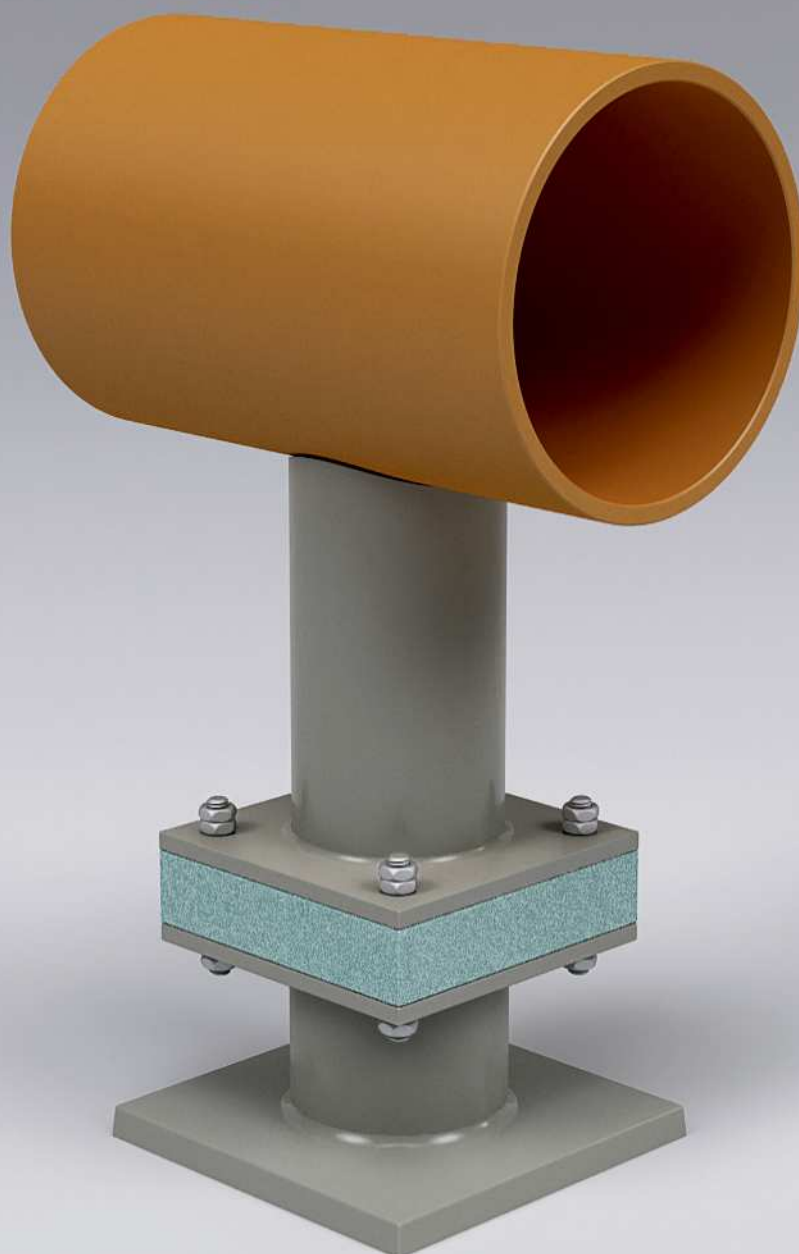
Carbon Steel  
Alloy Steel  
Stainless Steel

### Dimensions

Acc. client  
specification

### Surface finish

Mill  
Paint coated  
HDG



## Insulated Cold Pipe Dummy Leg

Welded to pipe dummy leg with variable height generally used as rest on horizontally arranged cold pipe system.

# IL01-B

### Material group

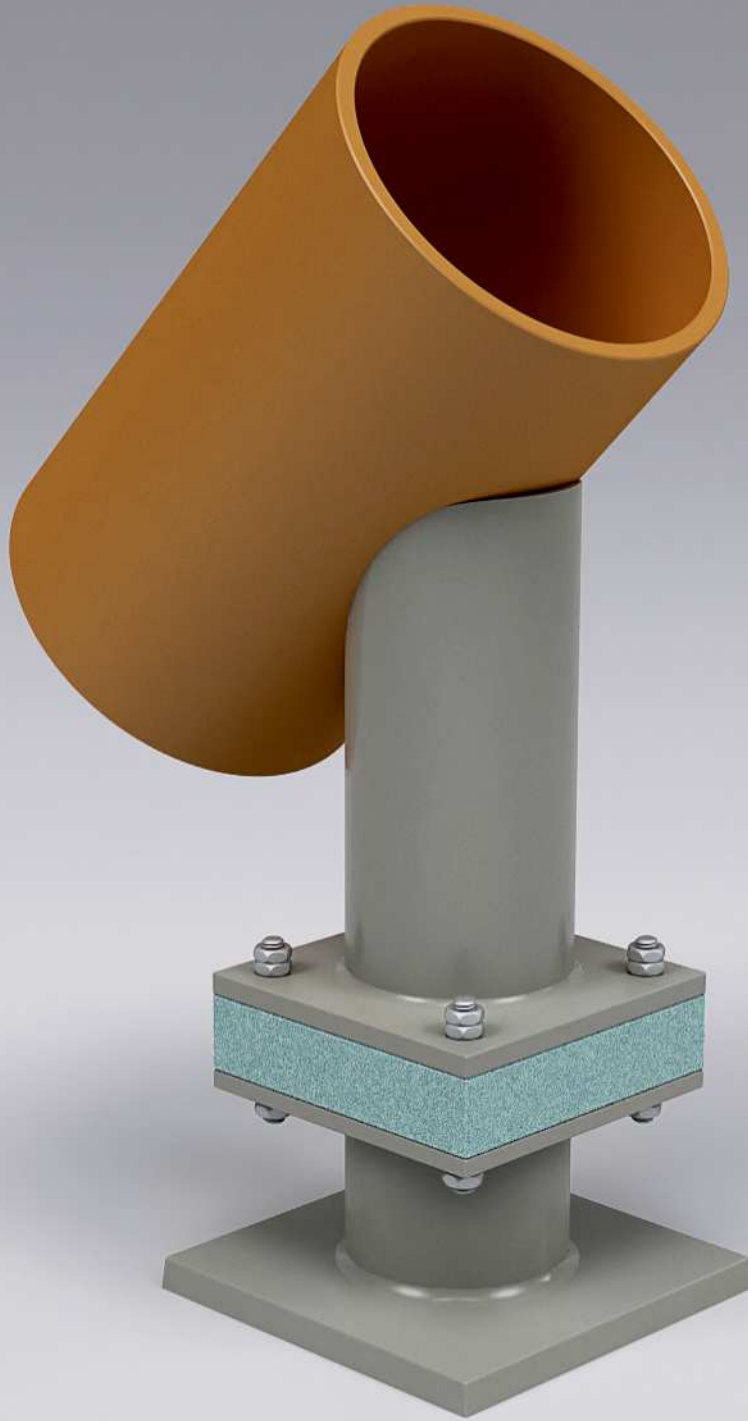
Carbon Steel  
Alloy Steel  
Stainless Steel

### Dimensions

Acc. client  
specification

### Surface finish

Mill  
Paint caoted  
HDG



## Insulated Cold Pipe Dummy Leg

Welded to pipe dummy leg with variable height generally used as rest on angular arranged cold pipe system.

# IL01-C

### Material group

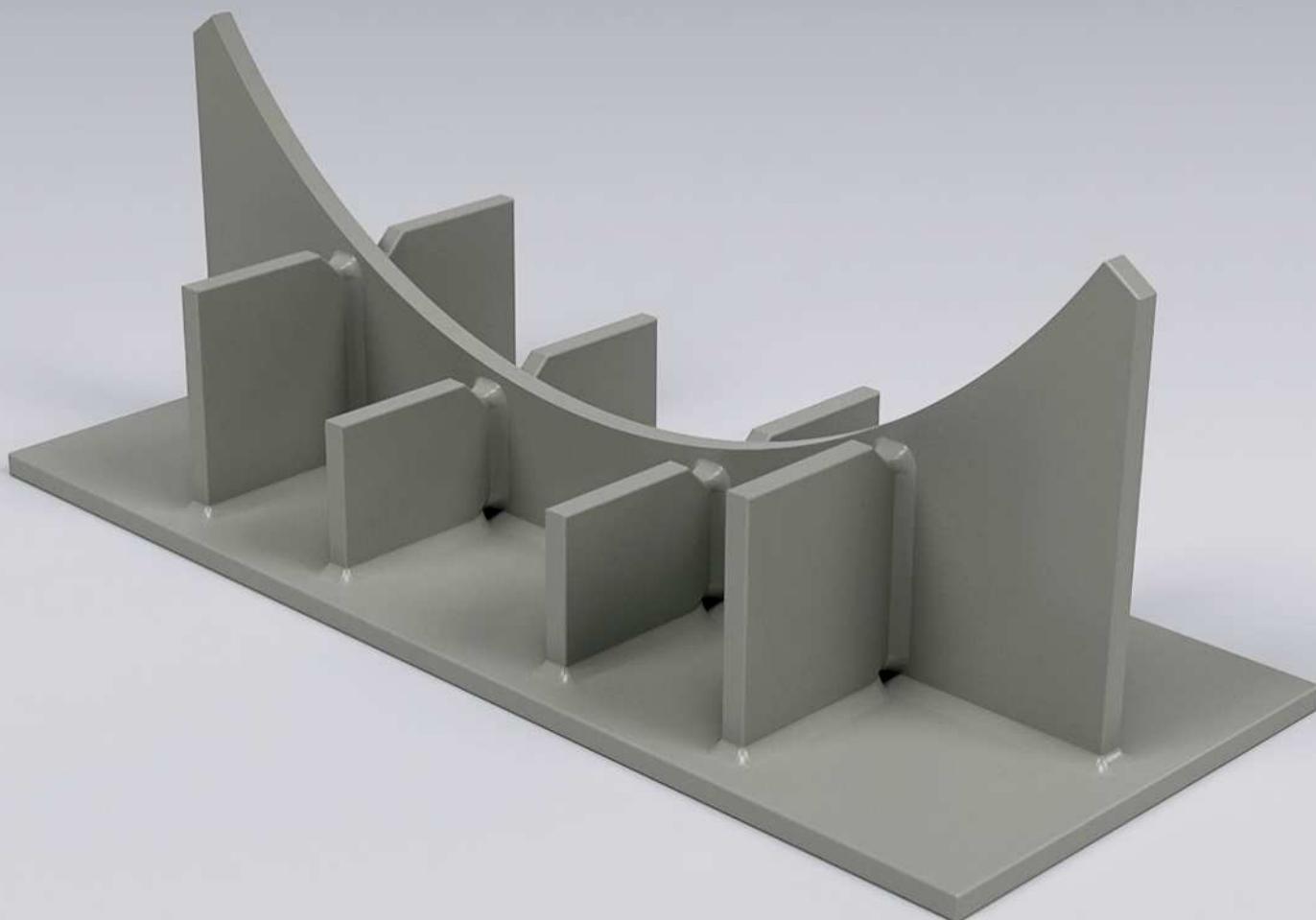
Carbon Steel  
Alloy Steel  
Stainless Steel

### Dimensions

Acc. client  
specification

### Surface finish

Mill  
Paint coated  
HDG



## Large Base

Welded base with variable height generally used as slide bearings for horizontally arranged pipe system. Application spectrum covers a diameter range above NPS24".

# LB01

### Material group

Carbon Steel  
Alloy Steel  
Stainless Steel

### Dimensions

above 24"

### Surface finish

Mill  
Paint coated  
HDG



## Welded Dummy Leg on Base Plate

Welded to pipe dummy leg on base plate with variable height  
generally used as rest on horizontally arranged pipe system.  
Can be used welded or bolted to structural beam

# WA01

### Material group

Carbon Steel  
Alloy Steel  
Stainless Steel

### Dimensions

Acc. client  
specification

### Surface finish

Mill  
Paint coated  
HDG





## Welded Shape Leg on Base Plate

Welded to elbow shape leg used as vertically oriented rest support, variable in height. Can be used welded or bolted to structural beam.

# WA03

### Material group

Carbon Steel  
Alloy Steel  
Stainless Steel

### Dimensions

Acc. client  
specification

### Surface finish

Mill  
Paint coated  
HDG



## Welded Adjustable Shape Leg

Welded to pipe shape leg. Used as vertically arranged pipe support.

# WA05

### Material group

Carbon Steel  
Alloy Steel  
Stainless Steel

### Dimensions

Acc. client  
specification

### Surface finish

Mill  
Paint coated  
HDG



## Welded Base

Welded base with variable height generally used as slide bearings for horizontally arranged pipe system. Application spectrum covers a diameter range from NPS 2" to NPS24".

# WB01

### Material group

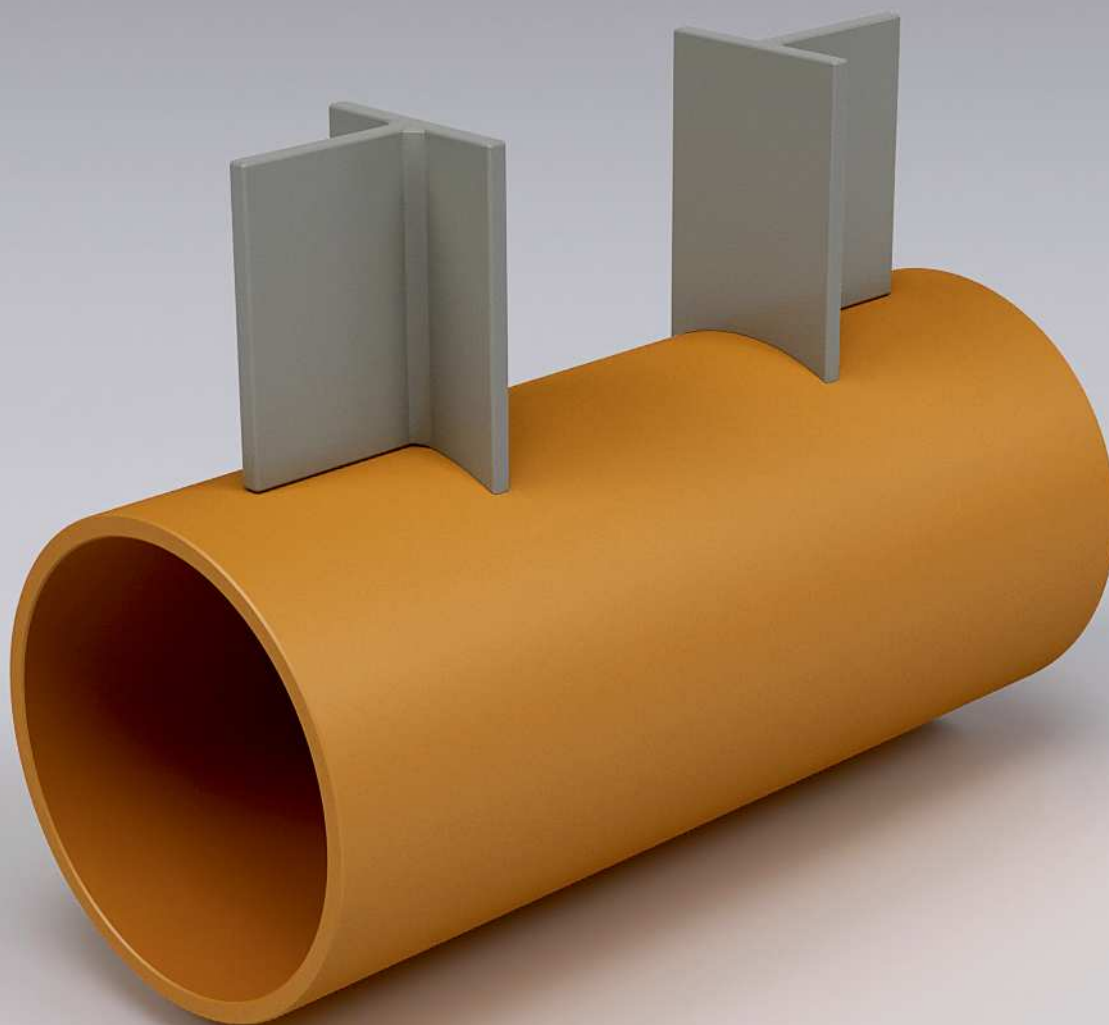
Carbon Steel  
Alloy Steel  
Stainless Steel

### Dimensions

Acc. client  
specification

### Surface finish

Mill  
Paint coated  
HDG



## Welded Guider

Welded guider to pipe with variable dimensions generally used as guide/stop for pipe axial movement.

# WG01

<b>Material group</b>	<b>Dimensions</b>	<b>Surface finish</b>
Carbon Steel	Acc. client	Mill
Alloy Steel	specification	Paint caoted
Stainless Steel		HDG



## Welded Base

**WB02**

Welded base + reinforcing pad with variable height generally used as slide bearings for horizontally arranged pipe system. Application spectrum covers a diameter range from NPS 2" to NPS24".

<b>Material group</b>	<b>Dimensions</b>	<b>Surface finish</b>
Carbon Steel	Acc. client	Mill
Alloy Steel	specification	Paint caoted
Stainless Steel		HDG



## Welded Dummy Leg

Welded to elbow dummy leg with variable height generally arranged as rest on elbow, vertically oriented support.

# WL01-A

### Material group

Carbon Steel  
Alloy Steel  
Stainless Steel

### Dimensions

Acc. client  
specification

### Surface finish

Mill  
Paint coated  
HDG





## Welded Dummy Leg

Extension for shop welded to elbow dummy leg with variable height generally arranged as rest on elbow, vertically oriented support.

# WL01-B

### Material group

Carbon Steel  
Alloy Steel  
Stainless Steel

### Dimensions

Acc. client  
specification

### Surface finish

Mill  
Paint caoted  
HDG



## Welded Dummy Leg

Welded to pipe dummy leg with variable height generally used as rest on horizontally arranged pipe system.

# WL01-C

### Material group

Carbon Steel  
Alloy Steel  
Stainless Steel

### Dimensions

Acc. client  
specification

### Surface finish

Mill  
Paint coated  
HDG



## Welded Dummy Leg

Welded to pipe dummy leg with variable height generally used as rest on angular arranged pipe system.

# WL01-D

### Material group

Carbon Steel  
Alloy Steel  
Stainless Steel

### Dimensions

Acc. client  
specification

### Surface finish

Mill  
Paint coated  
HDG



## Welded Trunnion Leg

Welded to elbow trunnion leg variable length used as a rest on elbow, axial oriented support.

# WL02-A

### Material group

Carbon Steel  
Alloy Steel  
Stainless Steel

### Dimensions

Acc. client  
specification

### Surface finish

Mill  
Paint coated  
HDG



## Welded Trunnion Leg

Welded to elbow trunnion leg variable length used as a rest, tangent to the inner side of the elbow.

# WL02-B

### Material group

Carbon Steel  
Alloy Steel  
Stainless Steel

### Dimensions

Acc. client  
specification

### Surface finish

Mill  
Paint caoted  
HDG



## Welded Trunnion Leg

Welded to elbow trunnion leg variable length used as a rest, tangent to the outer side of the elbow.

# WL02-C

### Material group

Carbon Steel  
Alloy Steel  
Stainless Steel

### Dimensions

Acc. client  
specification

### Surface finish

Mill  
Paint coated  
HDG





## Welded Trunnion Leg

Welded trunnion leg with variable length generally used as a rest on vertically arranged pipe system.

# WL02-D

### Material group

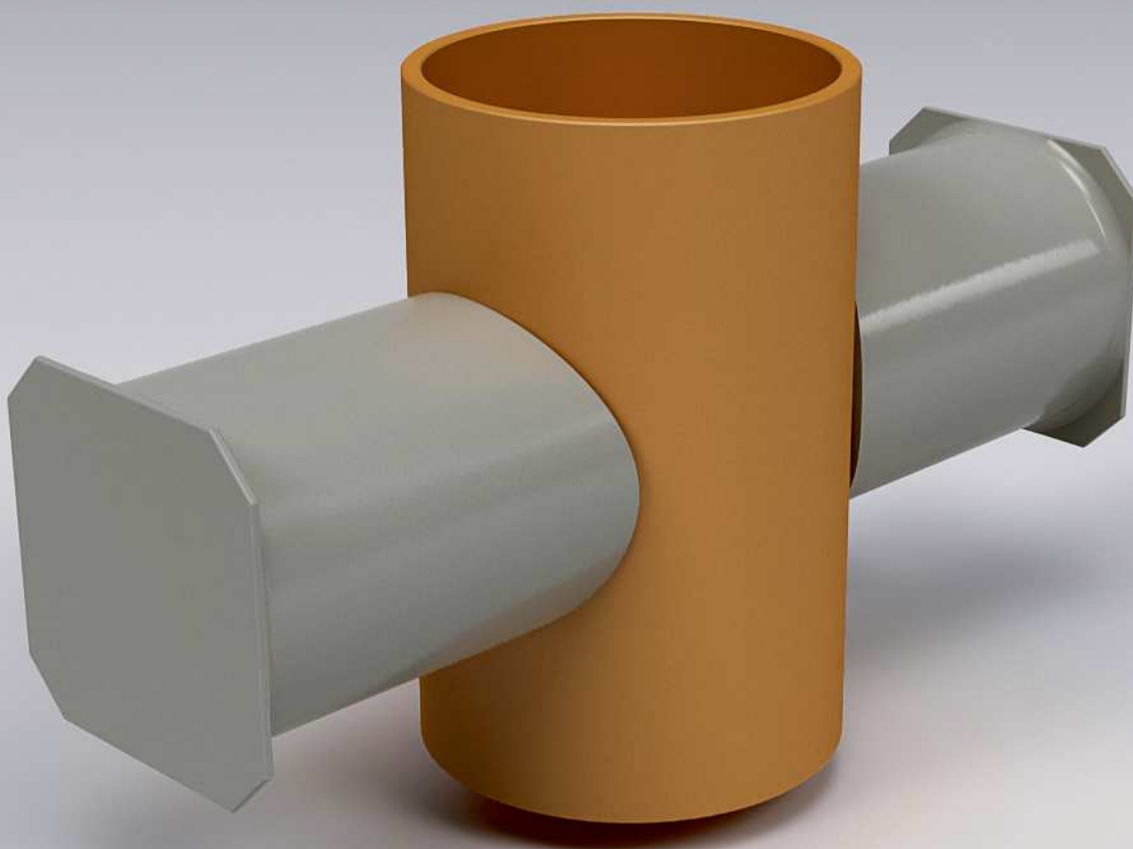
Carbon Steel  
Alloy Steel  
Stainless Steel

### Dimensions

Acc. client  
specification

### Surface finish

Mill  
Paint coated  
HDG



## Welded Trunnion Leg

Double sided welded trunnion leg with variable length generally used as a rest on vertically arranged pipe system.

# WL02-E

<b>Material group</b>	<b>Dimensions</b>	<b>Surface finish</b>
Carbon Steel	Acc. client	Mill
Alloy Steel	specification	Paint coated
Stainless Steel		HDG